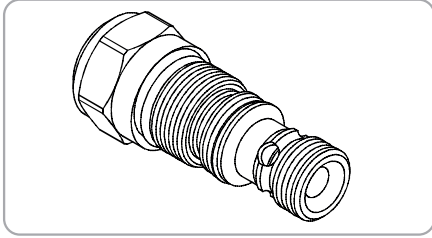
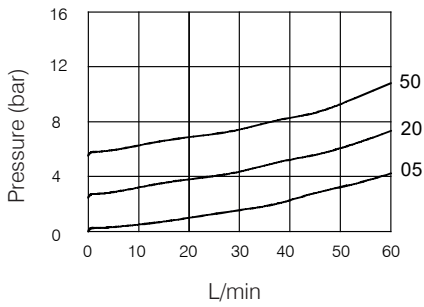


WLC SERIES CARTRIDGE LOGIC VALVES

WLC -10 Series



Performance



Specifications

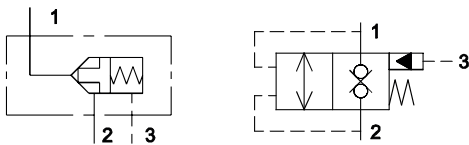
Model Number	Max. Pressure (bar)	Ratio Of Poppet Area	Max. Flow (lpm)	Weight (Kg)
WLC-10	350 (5076psi)	2:1	57(15.06 gpm)	0.14(0.30 lbs)
Fluid Type			ISO VG 32, 46, 68	
Viscosity			10~400 (59~1854 SSU)	
Operating Temperature			-15~70 (-5~158°F)	
Contamination Level			ISO4406.21/19/16 NAS1638,10	

How To Order

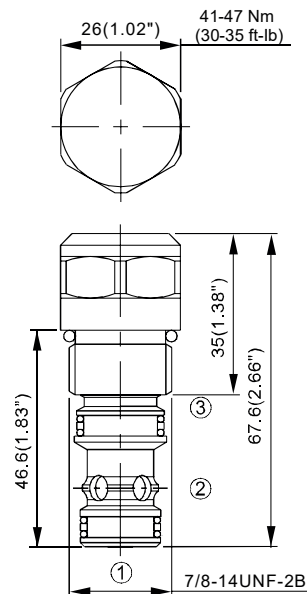
1	2	3
WLC	10	- 50

- 1 Valve Series**
WLC=Cartridge Logic Valves
- 2 Porting**
Size:10
Cavity :CS10-3S
- 3 Cracking Pressure**
05: 0.5 bar (7psi)
20: 2.8 bar (41psi)
50: 5.5 bar (80 psi)

Control Port (S)

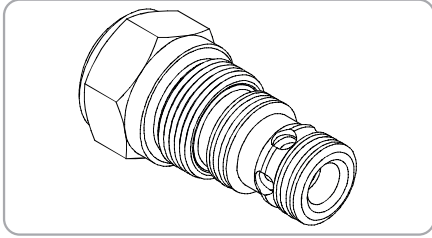


Dimensions

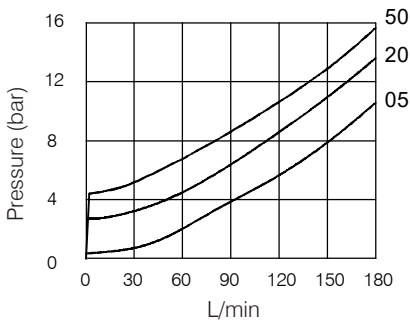


WLC SERIES CARTRIDGE LOGIC VALVES

WLC -16 Series



Performance



Specifications

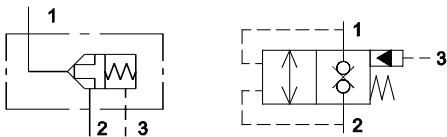
Model Number	Max. Pressure (bar)	Ratio Of Poppet Area	Max. Flow (lpm)	Weight (Kg)
WLC-16	350 (5076psi)	2:1	19050.19 gpm)	0.4 (0.88 lbs)
Fluid Type			ISO VG 32, 46, 68	
Viscosity			10~400 (59~1854 SSU)	
Operating Temperature			-15~70 (-5~158°F)	
Contamination Level			ISO4406.21/19/16 NAS1638,10	

How To Order

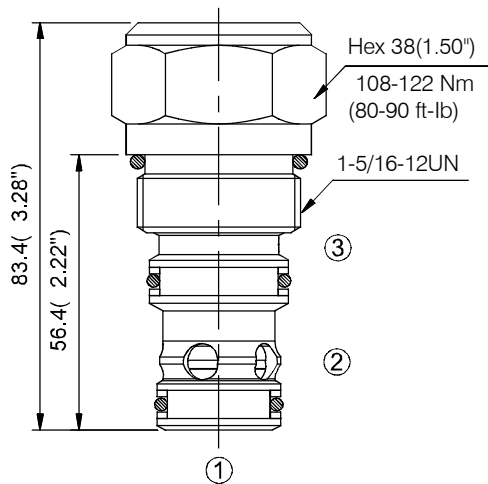
1	2	3
WLC	16	- 50

- 1 Valve Series**
WLC=Cartridge Logic Valves
- 2 Subplate Mounting Size**
Size:16
Cavity :CS16-3S
- 3 Cracking Pressure**
05 : 0.5 bar (7psi)
20 : 2 bar (29psi)
50 : 5.5 bar (80psi)

Control Port (S)

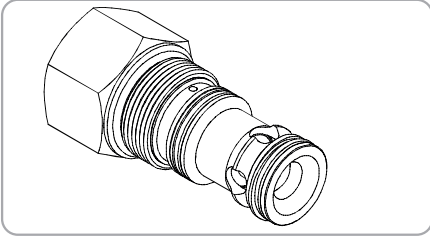


Dimensions

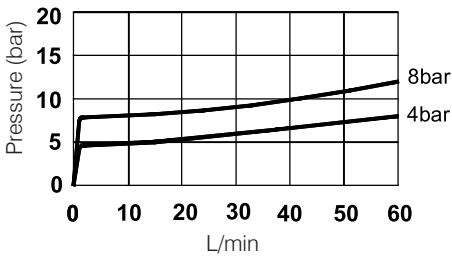


WLC SERIES CARTRIDGE LOGIC VALVES

WLC -20 Series



Performance



Specifications

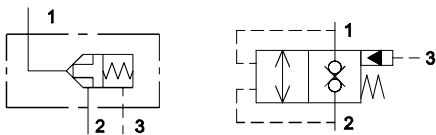
Model Number	Max. Pressure (bar)	Ratio Of Poppet Area	Max. Flow (lpm)	Weight (Kg)
WLC-20	350 (5076psi)	2:1	300(79.25 gpm)	0.82(1.81 lbs)
Fluid Type			ISO VG 32, 46, 68	
Viscosity			10~400 (59~1854 SSU)	
Operating Temperature			-15~70 (-5~158°F)	
Contamination Level			ISO4406.21/19/16 NAS1638,10	

How To Order

1	2	3
WLC	20	- 20

- 1 Valve Series**
WLC=Cartridge Logic Valves
- 2 Subplate Mounting Size**
Size:20
Cavity :CS20-3S
- 3 Adjustment Pressure**
20 : 2.8 bar (40psi)
50 : 5.5 bar (80psi)
110: 11 bar (160psi)

Control Port (S)



Dimensions

